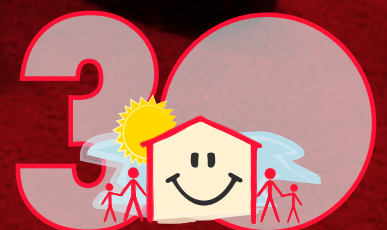


Door

WHAT THE CAT

2016 ANNUAL REPORT

# 30 YEARS OF PURPOSEFUL PASSION 1986-2016



Atlanta Children's Shelter  
ENDING FAMILY HOMELESSNESS FOR 30 YEARS

## BY THE NUMBERS

59

CHILDREN SERVED BY ACS

41

FAMILIES SERVED BY ACS

100%

PERCENTAGE OF FAMILIES  
SERVED BY ACS LIVING  
IN POVERTY

83%

PERCENTAGE OF SINGLE  
PARENT FAMILIES SERVED  
BY ACS

68%

PERCENTAGE OF FAMILIES SERVED BY ACS  
PERMANENTLY HOUSED

*45,000 children experience  
homelessness in Georgia.*

- Georgia Alliance to End Homelessness

# Our Mission

The Atlanta Children's Shelter provides loving, quality child development and support services for homeless families striving to become self-sufficient.



# Our Vision

To be the leading and most valued organization in Metro Atlanta which positively impacts the lives of homeless children and their families.



# Our Values

We address the needs of the entire family and provide all services free of charge in return for the family's commitment to self-sufficiency as well as their commitment of time and energy.



*333,060 children now experience homelessness annually in the United States.*

- National Alliance to End Homelessness

# Letter from the Executive Director



Dear Friends & Supporters,

Thank you for helping the Atlanta Children's Shelter's end family homelessness and generational poverty for 30 years. We thank our visionary founders, our dedicated past and present board members, our generous donors and sponsors, our tireless volunteers, our unwavering community partners, and our dedicated staff. It was 30 years ago that we started as one voice asking what can we do to help end family homelessness and soon that voice was joined by others. Collectively, those voices have become what we now proudly call the Atlanta Children's Shelter.

Together we have helped over 5,000 homeless families regain stable employment and permanent housing. Together we have helped over 8,000 homeless children learn and thrive, but sadly family homelessness still exists. Each night in Metro Atlanta, an estimated 4,000 homeless women and children sleep on the streets. And over 1,000 of these children are under the age of 6. So after 30 years of our efforts, the tide of family homelessness persists and so must we.

In 2016, we were honored to receive the Martin Luther King Jr. Community Service Award. The reason I often mention this is because I believe this award was the culmination of our 30 year mission and recognition of everyone who helped us achieve it. This award is also meaningful because it is only given once every 10 years. Here is a paragraph from the award program:

*This award was given to the Atlanta Children's Shelter for its work in the Metro Atlanta Community to raise awareness of social injustice, speak on behalf of justice, celebrate diversity, and impel action in building a better future for all. For your efforts to not only envision solutions to the many inequities that characterize the world we live in, but to also have the courage to act and to persevere in the face of some very challenging circumstances.*

Those words describe everyone who has helped the Shelter become who we are today. But most importantly those words describe the homeless parents that come to our doors and who we help to escape their dire circumstances – homelessness, domestic violence, and generational poverty. Those words describe the homeless children in our classrooms who blindly place their trust in us so that they can learn, love, and thrive.

The homeless families that we serve work tirelessly and courageously to reach self-sufficiency. Their journeys are challenging, at times heart breaking, but they are also stories of triumph. Let's take the words of the MLK Jr. Award as a prescription that each of us needs to follow every day with intention and purpose ... ***Let us have the courage to act and persevere in the face of challenging circumstances to build a better future for all.***

Thank you for enabling the Atlanta Children's Shelter to do this for the past 30 years and we look forward to continuing our life-changing, and at times life-saving, programs and services with your continued support.

With Heartfelt Gratitude,

*Sandra Holiday*

Sandra Holiday, Esq.  
Executive Director



# Overview of the Atlanta Children's Shelter

Founded in 1986 by the Junior League of Atlanta and located in the North Avenue Presbyterian Church, the Atlanta Children's Shelter provides free, quality day care, emotional support, an educational curriculum for homeless children, and focused social services for their families.

We are dedicated to helping families overcome the issues that contribute to homelessness, including domestic violence and job loss. The Atlanta Children's Shelter focuses on the long term self sufficiency of the family – which sets us apart from other Atlanta homeless shelters. Since 1986, the Atlanta Children's Shelter has cared for over 8,000 homeless children and provided services for more than 5,000 homeless families.

14%

PERCENTAGE OF FAMILIES SERVED WHO HAVE A HISTORY OF PRIOR HOMELESSNESS

15%

PERCENTAGE OF FAMILIES SERVED WHO HAVE A HISTORY OF DOMESTIC VIOLENCE

36%

PERCENTAGE OF FAMILIES SERVED WHO HAVE A HISTORY OF MENTAL ILLNESS

# Letter from the Board Chair



Dear Friends and Supporters,

This year the Atlanta Children's Shelter celebrated its 30th anniversary, a milestone for which we are very proud, and we recognize that not many nonprofit organizations will meet. Throughout 2016, we took the time to look back at our progress, and to recognize our humble beginnings and our founding partners. Since inception, the Shelter has helped over 8,000 children and their families overcome homelessness. We are proud of that legacy, and our year in reflection of that success only energizes us to plan ahead for the next thirty years.

The Shelter was founded thirty years ago with the simple mission to provide a safe and loving environment for the children of homeless families. We have evolved into so much more than that. Our present goal is to **end the cycle** of homelessness for the entire family, which means tackling hard issues such as generational poverty, affordable housing, mental health and access to quality early childhood education. The staff and Board of Directors at the Shelter are ready and willing to tackle these issues, and we have the results to show that the Shelter is accomplishing its mission, one family at a time.

In 2016, the Shelter served 66 children and 41 families. Of those families, 68% obtained permanent housing. Over the past 3 years, 100% of our families served maintain housing and employment. The Shelter works with the entire family, with a host of community resources, partnerships and support, for the benefit of these children.

The cost of providing these services and skills necessary to serve our mission continue to rise – the Shelter, our families, employees and partners are not immune to issues facing our entire community such as rising healthcare costs, rents, and stagnant wages. We have taken a very hard look at our expenses to maintain fiscal health. We have also invested more time and resources towards our stewardship and fundraising efforts. I am confident our efforts will make us a stronger enterprise in the coming years.

I continue to be amazed by the Shelter, the staff, the families we serve, and my fellow board members. Changing lives for the better is challenging, time consuming work, but our staff is the best at what they do. Billie Walker, Childcare Manager, was named the Georgia Association of Young Children "Child Caregiver of The Year" in 2016. Our Development Director, Barry Hundley, was honored by Xposure Magazine as their "Excellence in Community Enrichment" Vanguard Award recipient this past year as well. Last but not least, the Shelter was honored as "Best of Atlanta" in the nonprofit category by the Atlanta Award program.

I thank each of you for your continued support and generosity. I hope that your review of this year's report will demonstrate our continued commitment to our mission, and the length to which your financial support goes to make a direct impact on the lives of the families we serve.

*Alison Jones*  
Alison Jones  
2016 Board Chair

# Partnerships & Volunteerism

The Atlanta Children's Shelter would not have accomplished the things it has over the past 30 years without the great volunteerism and partnerships it receives from individuals and community groups. One of those groups is Community Advanced Practice Nurses (CAPN) led by its Executive Director, Connie Buchanan. She works tirelessly to make healthcare accessible to homeless families – at no cost – because she believes that access to healthcare empowers people and restores communities.

The Atlanta Children's Shelter began its partnership with CAPN in 2004, and since then they have provided over 4,300 clinic appointments to the homeless families at the Atlanta Children's Shelter. Through these visits, CAPN has provided healthcare and health education to over 780 homeless children and over 350 homeless parents.

*Note from Nurse Connie ...*

*As executive director and a nurse practitioner, I am quick to tell everyone about the value of our partnership. My experience with ACS actually began in 1986 when I was a graduate student at GSU. I was working on my masters and had the opportunity to provide physical and developmental exams for the children. It was my first introduction to healthcare for children who were living in cars, shelters and on the street. One sweet little girl gave me two different names when I was providing care for her. When I asked her for an explanation, she said that one name was when she was living in Texas and the other name was for living in Atlanta. She and her mother were afraid her Daddy would find them and hurt them if he knew where she was. My world had suddenly changed; I opened up to the countless problems that families face during incredibly difficult times.*

*CAPN's partnership with ACS is a tremendous opportunity to support the missions of both organizations. ACS is able to expand the scope of services that their families receive – CAPN is able to provide care for children where they learn and play, and interact with their families in a friendly setting, while evaluating their physical, emotional and developmental health. Working with ACS allows us to provide care for the children and families as a team. Families who have lost all of their personal support become part of a caring community as members of the ACS program, and that community surrounds them for months and years after stabilization.*





# Early Childhood Education

## Billie Walker, Childcare Director

For over 30 years the Atlanta Children's Shelter has provided quality childhood education services to homeless children in Metro Atlanta by providing the highest quality of education and social services to students enrolled in the program. Our Creative Curriculum encourages children to learn and explore the world around them by using a science based approach to creative thinking, using their classroom and resources to learn. ACS offers three levels of therapy: Free Family Outreach services, Speech and Language Therapy through Georgia State, and Play Therapy provided by the Purpose Project. Additional services include counseling services, Babies Can't Wait, and Preschool yoga as a way to redirect behaviors and transitions. 30 years ago families received childcare services each day on a first come, first served basis. Today, clients entering the program receive service for at least 2 years.

## IMPACT

Our agency has improved services by becoming licensed by Bright From The Start in 2012, and becoming NAEYC accredited in 2013, and ACS, has begun the process of becoming a Quality Rated-Inclusion site by the end of 2017. We have added this Inclusion Model to the Quality Rated process to improve our current service plan by offering a high standard of quality childcare service to all homeless children with or without disabilities. Our goal is to service children with disabilities in the same environment as children without disabilities, to give all children an equal opportunity to thrive and achieve developmentally age appropriate goals during the duration of each child's enrollment. ACS provides Steam Academy Summer Enrichment, Technology, Spanish, Play Therapy, Behavior Therapy, on-site Intervention and Speech and Language Therapy, and medical service CAPN that includes a Nurse Practitioner throughout the entire school year. All of the services provided at ACS are free of charge. The footprints were made 30 years ago and there have been over 5,000 families to walk that path, including the Childcare director of ACS.



37,963

HOMELESS CHILDREN ARE ENROLLED IN METRO ATLANTA SCHOOLS

24%

PERCENTAGE OF CHILDREN LIVING IN POVERTY IN GEORGIA

40%

PERCENTAGE OF GEORGIA'S CHILDREN NOT ATTENDING PRESCHOOL

# Early Childhood Education

## SUCCESS STORY



Christopher Bassett and his younger sister Nicole Thompson attended the Atlanta Children's Shelter six years ago. The two energetic, bright, and intelligent children arrived at the Atlanta Children's Shelter with their mother, Regina Bassette, a single parent just beginning her transition from homelessness to independence. Christopher entered the Preschool program as a thriving, eager 4 year old making new friends, and actively engaged in the different areas in the classroom including science, math, social studies, and most of all art. Christopher also enjoyed playing catch on the playground, riding bikes, and mastering the obstacles, always eager to learn new skills to help him prepare for Kindergarten. Christopher used creative art to complete amazing works and he would proudly share his artwork with his fellow classmates. Christopher would help his mother with his little sister most days at drop-off and pick-up time. He really enjoyed communicating with his friends, educators and most of all, working with the Georgia State University students, dancing with Moving in the Spirit and engaging in other ACS events with his family.

Nicole Bassette joined ACS as an infant just a couple of months old in 2011. In just a few months, Nicole began to reach most of her developmental milestones and received positive encouragement to go further and begin a new milestone. Nicole successfully accomplished different developmental stages such as reaching, crawling, sitting up, feeding herself, first words and standing, and eventually learning to walk. Nicole enjoyed sharing a meal with her new friends in childcare during breakfast, morning snack, lunch, and afternoon snack. ACS created a safe and holistic environment with plenty of opportunities for Nicole to thrive as an infant to young toddler learning through play, developing skills that she would later use as a toddler through Preschool to enter elementary school and beyond.

ACS has served these siblings during their early years of childcare and followed them along their journey to Elementary School, actively keeping up with their development, grades, and successful promotion from one grade to the next. ACS also received updates during the holiday months as each child learned to ride their bikes for the first time. Recently both children gained a sibling, a baby sister, and the Atlanta Children's Shelter will be there to continue to support the family in any way possible. Currently Christopher is headed to the fifth grade and Nicole is headed to the second grade. The children are doing very well in school, making excellent grades and even at times advancing past their fellow peers. Nicole has received high honors this year with a host of certificates, Principals Awards and several other recognitions.

**\$7,644**

**ANNUAL COST OF INFANT  
CHILDCARE**

**\$6,500**

**ANNUAL COST OF PRESCHOOL  
CHILDCARE**



# Social Services Program

## Mellony D. Gaston, Social Services Director

Author Harley King wrote, "Service to others in their time of need is a privilege and an honor." For 30 years serving others has been at the forefront of everything that the Atlanta Children's Shelter does, but the privilege comes with great responsibilities. We have been entrusted with helping others change their lives by providing exceptional service as we guide them through homelessness to self-sufficiency.

During the last 30 years, ACS's Social Services Department has experienced growth in many areas. We have gone from hundreds of clients with small children lining outside the front door vying for 40 slots for daily admission to offering permanent spaces in the classroom through a structured enrollment process. In 1997, an Employment program was birthed. In 1998, the Aftercare Program was developed to monitor those families leaving the shelter and moving into permanent housing. New services such as credit counseling, housing resettlement, nutrition groups, MOMENTUM Mentoring and Women Seeking Change Groups were introduced. Most recently, Trauma Informed Care, a universal program that teaches individuals how to respond to mental health triggers, and Quality Enhancement Standards and Support Training Accreditation (QESST) through the Georgia Alliance to End Homelessness were implemented and became a vital part of our standard operations. A new assessment tool was developed to measure clients' progress, and a new data tracking system to better maintain statistics was added. Most importantly, the Social Services Department was provided with a dedicated space to provide more confidential services.

In 2016, the Social Services Department assisted 42 parents and 59 children with pursuing their goal of self-sufficiency. We helped 70% of our parents find employment and 68% secure permanent housing. To support our families in their quest to achieve long-term stability, the Social Services Department provides counseling and crisis management, employment programming, life skills workshops, housing assistance and aftercare services. For those transitioning to permanent housing, assistance with first month's rent, security deposits, utility deposits, Furniture Bank of Metro Atlanta fees, and home starter kits are provided.

Although hundreds of families and thousands of children have been impacted, homelessness is still a growing problem in our community and the needs of this population are great and diverse, often creating new challenges for service providers that require ingenuity, experience, partnerships and collaborations that will facilitate an expansion of intellectual and tangible resources, support and expertise, for our families.

## SUCCESS STORY



### Thomasine Mungo

After moving to Atlanta, Ms. Mungo found work in the hotel industry; however, the itinerant schedule did not provide enough hours to adequately cover her living expenses, creating emotional stress that ultimately led to unemployment and eviction. After staying with a friend for a short time, Ms. Mungo and her children entered the shelter system, officially becoming "homeless".

Ms. Mungo enrolled at the Atlanta Children's Shelter, where she received quality early childhood education for her youngest son, and counseling and case management for herself. She actively participated in Hire Up, the agency's employment program, where she received guidance, support and technical assistance with her job search. Ms. Mungo found employment as a Community Health Worker earning a livable wage, left the shelter system, and moved into her own apartment which stabilized her family and brought peace to her life.

Today, Ms. Mungo is empowered. She is still permanently housed and employed full-time, and has learned to plan, strategize and set goals. Ms. Mungo works hard, budgets and saves - effectively utilizing money management tools acquired through ACS. She is careful in decision-making and works to develop healthy relationships. More importantly, Ms. Mungo is eager to give back and welcomes opportunities to share her knowledge and experiences. We are extremely honored and proud that Ms. Mungo allowed us to serve in her time of need.

# 100%

PERCENTAGE OF PARENTS SERVED THAT HAVE MAINTAINED PERMANENT HOUSING

# 14%

PERCENTAGE OF PARENTS THAT HAVE EXPERIENCED CAREER PROGRESSION

# Hire Up Employment

## Bravid Harris, Employment Counselor

"The only place where success comes before work is in the dictionary." This is what the Hire up Employment Program stresses to our jobseekers on a regular basis - work must be put forth before success can be realized.

The Hire Up Employment Program has experienced significant growth from its inception in 1997 until now, such as:

- The program went from having to send jobseekers to the Georgia Department of Labor to complete one application per day, to having laptops with printing capabilities accessible for daily job search efforts.
- Early in the development of the employment program, job search workshops were conducted in the conference room; we now have a dedicated workshop room for parents. Friday was the only employment workshop day; now, workshops are a daily event, and cover topics such as nutrition, credit counseling, financial wellness, women's groups, family counseling groups, and soft- skills based employment class series.
- Early in the program MARTA assistance was issued using tokens because the cards were not developed yet.
- The data collection methods back then were marginal and did not capture many of the statistics we use today to fine-tune our program strengths and goals.

The Hire Up program had a 70% employment rate in 2016 with an \$11.06 average rate of pay, and an average of 60 days in program before gaining employment. This is a constant reminder of the importance of the commitment needed to gain employment and move into a positive future.

During 2016, **Family Dollar** put together one of the most dedicated hiring efforts that the Hire Up Program has ever experienced by employing our clients and arranging their work schedules to be compatible with their needs and ACS program services. The willingness to help our parents move forward and the commitment to serve has established Family Dollar as one of our most innovative partners.

Hire Up had one parent that has completed the Certified Assistant Nursing classes at **New Hope Enterprises**, passed her examination, and was hired as a CNA.

**Hilton International** has maintained their stature as a premier employment partner to the Hire Up Program. Currently three parents are employed there, and Hilton International is willing to help these employees grow within the company.

Educationally speaking, Hire Up is working closely with **Georgia Piedmont College** and **Atlanta Technical College** to assist our jobseekers in possessing viable skills for today's workforce. Georgia Piedmont College provides computer-based training to the parents, and Atlanta Technical College offers certification courses in various vocational fields.

**Wellspring Empowered Living** program is designed to assist ladies aged 18 – 40 years old who are at risk. Hire Up had one parent attending GED preparation coursework through this organization.

**Job Corps Atlanta** has been a supportive partner of Hire Up by allowing parents to work on GED acquisition through classes. Hire Up has one parent currently working on her GED and career- based training.



## SUCCESS STORY

### Terry Deshommes

Terry Deshommes began in the Hire Up program and gained employment in a warehouse performing logistics based duties. Terry wanted to get his Commercial Driver's License so that he could really provide for his family the way they deserved. The Employment Counselor encouraged Terry to enroll in CDL classes to get his dream on the move. Terry enrolled in the CDL classes and attained the license needed to drive tractor trailers. He became frustrated almost immediately, as all of the driving positions he applied for required a minimum of one year over the road experience. Being coached along the way, Terry pressed on until he finally got a chance to go on the road with an owner-operator of a big rig. Terry gained the experience and on the job training needed to keep his dream alive. After hundreds of hours logged on the road, and establishing a solid work ethic with his employer, Terry was able to purchase his own tractor-trailer, and now is an owner-operator. Terry wants to give someone else an on the road opportunity like the chance that was given to him.

# Aftercare Services

## Akiba Jackson, Family Services Coordinator

The Aftercare Program has played an indelible part serving as the “life support” mechanism for our families that transitioned from homelessness to self-sufficiency. Providing the continuum of care these families needed to sustain and maintain stability was paramount; and became the common denominator in ensuring that all efforts would focus on:

- Monthly follow-ups
- Timely communication of status changes
- Streamlining goals set towards higher education or the obtainment of skilled certifications.

These proactive measures alone proved to be the cornerstones to financial prowess, quality parenting, and mental health and wellness, thereby strengthening our families with the essential tools needed to navigate life’s challenges.

In 2016, the families enrolled in the Aftercare Program took full advantage of our guided support, and were steadfast in implementing the necessary provisions that would enable them to continue to thrive. Of the 19 families enrolled, 100% maintained housing, 81% maintained employment, with 14% receiving promotions or raises. Moreover, a total of 38% enrolled in college or a certified vocational training program - all proven results of the effectiveness in planning one’s work and working one’s plan.

## SUCCESS STORY



### Angelique Niare

Ms. Angelique Niare epitomizes plan and action. She overcame the self-defeating limitations of depression, low self-esteem and negative thoughts, results of a marriage gone awry, and subsequently the financial depletion that would follow. Being a

college graduate with a Bachelor’s Degree in Sociology, Ms. Niare struggled with an embarrassing sense of failure when faced with the daunting reality of homelessness. Having to move herself and three daughters into a shelter, she questioned her ability to be a good parent and role model. This ordeal would only heighten her fear of the unknown, while ultimately

challenging her to tap into inconceivable core strength, turning those fears into her fuel.

Once becoming affiliated with SisterCare Alliance, a self-development organization for women seeking holistic healing, Ms. Niare learned a great deal about herself. It was through the power of transformative thought and visualization that she rediscovered her self-worth.

The Atlanta Children’s Shelter played a major part in empowering Ms. Niare on her mission. She received childcare for her two youngest daughters, counseling on setting and executing S.M.A.R.T goals through ongoing case management, and resources needed to re-enter the workforce through participation in the HIRE Up Program. Moreover, Ms. Niare also benefitted from the Keys to Independence Housing Program which provided short-term rental assistance once she secured affordable housing. Lastly, her final transition was to the Aftercare Program, which offered ongoing support for an additional year.

Ms. Niare secured a Special Education Paraprofessional Teaching position at Charles Drew High School in the Clayton County School District and was later promoted to Interrelated Teacher. She continues to teach Special Education in the Autism Unit and has set a goal to take the GACE in Economics to become a Certified Economics Teacher. Ms. Niare’s vision is to use her personal financial indiscretions as teachable moments with her future students.

The stint of homelessness sparked Ms. Niare to become a Court Appointed Special Advocate (CASA), a trained volunteer empowered by the courts to help bring positive change to the lives of children in neglected and abusive foster care homes. This need to “pay it forward” resonated deeply with her, and became the driving force behind Housekeeping With A Purpose, a Metro Atlanta cleaning service she co-founded to employ homeless and disenfranchised women to work towards establishing self-sufficiency of their own.

Ms. Niare became a beacon of hope for those less fortunate, and was honored as an ACS 2016 Achiever. When asked to share her most inspirational quote to date, Ms. Niare proudly quoted Dr. Martin Luther King, Jr. verbatim: “If a man is called to be a street sweeper, he should sweep streets even as Michelangelo painted, or Beethoven composed music or Shakespeare wrote poetry. He should sweep streets so well that all the hosts of heaven and earth will pause to say, ‘Here lived a great street sweeper who did his job well.’”

# Signature Events

## ANNUAL 5K RUN/WALK (BUNNY RUN)

The Annual 5 to Thrive 5K Run/Walk took on a Bunny theme because the race was held the Saturday before Easter. The event was held in Piedmont Park and was a qualifier race for the Peachtree Road Race. Over 700 people came out with their bunny ears and helped us raise over \$96,000. Special thank you to **KPB Foods, The Home Depot, The Suzuki School, The Art Institute of Atlanta** and **Nead Werx** for your sponsorship.



## ACHIEVERS' CELEBRATION

October 22 was the date we celebrated our 30 Anniversary by honoring those families who have not only transitioned out of homelessness, but have also maintained self-sufficiency for a year or more. This year's celebration took on a Gatsby theme and attendees came out attired in their roaring 20's best. From spats to flapper dresses to feathered headpieces, festive fun was the name of the game.

This annual event draws some of the most influential members of Atlanta's business community including sponsorship from **Primerica, KBP Foods** (Humanitarian), **Accent Decor** (Champion), **Home Depot, Suzuki School, UPS, Partners Atlanta, Kimberly Clark Corp., Nead Werx, Delta, Classic Commercial Services** (Benefactor), **KPMG, Alston & Bird, Dekra** (Nurturer), **The Junior League of Atlanta, Catamount Constructors, Dan and Debby Heller**, and **Michael Menis** (Achiever).



## ANNUAL HOLIDAY HOUSE

Our Annual Holiday House is a weeklong event that provides homeless families with toys, clothing, household supplies and various other gifts during the holiday season. This year we helped 172 parents make the holidays bright for 565 children. This is a time when our community partners, staff and Board of Directors come together to spread the joy of the holiday season and share the importance of giving to homeless families throughout metro Atlanta. 41 community partners had collection parties leading up to the event and 427 volunteers helped out the week of Holiday House. Thank you to **St Luke's Episcopal Church** for joining our other community partners and helping to put smiles on our families faces.



# Financial Position

## Selected Comparative Financial Information\*

Years Ended December 31, 2016 and 2015

|   | <u>2016</u>                | <u>2015</u>                |
|---|----------------------------|----------------------------|
| <b>REVENUE</b>                            |                            |                            |
| Contributions                             | \$ 995,837                 | \$ 1,080,792               |
| Grants                                    | 234,546                    | 225,640                    |
| In-Kind Donations                         | 195,911                    | 216,504                    |
| Investment Income                         | 86,519                     | (25,052)                   |
| Total Revenue                             | <u>\$ 1,512,813</u>        | <u>\$ 1,497,884</u>        |
| <b>EXPENDITURES</b>                       |                            |                            |
| Program Services                          | \$ 1,048,520               | \$ 1,129,906               |
| Management and General                    | 211,636                    | 270,253                    |
| Fundraising                               | 292,944                    | 214,762                    |
| Total Expenditures                        | <u>\$ 1,553,100</u>        | <u>\$ 1,614,921</u>        |
| <b>Increase/(Decrease) in Assets</b>      | <u><b>\$ (40,287)</b></u>  | <u><b>\$ (117,037)</b></u> |
| <br>                                      |                            |                            |
|   | <u>12/31/16</u>            | <u>12/31/15</u>            |
| <b>ASSETS</b>                             |                            |                            |
| Cash & Cash Equivalents                   | \$ 424,691                 | \$ 547,182                 |
| Accounts Receivable                       | -                          | -                          |
| Contributions Receivable                  | 63,280                     | 60,546                     |
| Grants Receivables                        | 29,763                     | 20,000                     |
| Prepaid Expenses and Other Assets         | 17,126                     | 16,830                     |
| Property & Equipment                      | 593,110                    | 669,011                    |
| Investment Securities                     | 1,687,830                  | 1,525,992                  |
| Total Assets                              | <u>\$ 2,815,800</u>        | <u>\$ 2,839,561</u>        |
| <b>Total Liabilities (All Current)</b>    | \$ 77,707                  | \$ 61,181                  |
| <b>NET ASSETS</b>                         |                            |                            |
| Unrestricted                              | \$ 2,607,200               | \$ 2,650,833               |
| Temporarily Restricted                    | 130,893                    | 127,547                    |
| Total Net Assets                          | <u>\$ 2,738,093</u>        | <u>\$ 2,839,561</u>        |
| <b>Total Liabilities &amp; Net Assets</b> | <u><b>\$ 2,815,800</b></u> | <u><b>\$ 2,839,561</b></u> |

\* The numbers presented herein are summarized from the Atlanta Children's Shelter's independently audited annual financial statements. Complete audited financial statements prepared by the independent firm of Carr, Riggs & Ingram, LLC are available upon request and on our webpage at [www.acsatl.org](http://www.acsatl.org). Please request a copy prior to making significant contribution decisions based on the amounts presented herein.



# ACS Donors 2016

## \$25,000 & UP HUMANITARIAN

Herbalife Family Foundation  
KBP Investments, LLC  
Sarah K. Kennedy  
The Primerica Foundation, Inc.  
WSB (Channel 2)

## \$15,000–\$24,999 VISIONARY

City of Atlanta Emergency  
Shelter Grant  
Community Foundation for  
Greater Atlanta, Inc.  
Greater Giving  
John H. and Wilhelmina D.  
Harland Charitable  
Foundation Inc.  
Locumtenens  
Nead Werx, Inc.  
The Carmax Foundation  
The Cuisson Company  
The Imlay Foundation, Inc.  
United Way of Greater Atlanta,  
Inc. Collaborative Fund

## \$10,000–\$14,999 CHAMPION

Accent Decor, Inc.  
Carolyn W. Fierer  
Coca Cola Company  
Georgia Securities Association  
Georgia State University  
IBM Employee Charitable  
Contribution Campaign  
Insurance Industry Charitable  
Foundation, Inc.  
J. C. Kennedy Foundation Inc.  
Julie and Jansen Bailey  
Mary Allen Lindsey Branan  
Foundation  
PartnersAtlanta, Inc  
Richard and Suzanne Schultze  
Robert and Paula Charles  
The Emily Winship Scott  
Foundation  
The Home Depot Foundation  
The Ray M. and Mary Elizabeth  
Lee Foundation  
UPS  
Wells Fargo Foundation  
Wells Fargo WM NC-  
Philanthropic East

## \$5,000–\$9,999 BENEFACTOR

Aidan Rhyndress  
Alison S. Rand  
American Endowment  
Foundation  
Anonymous  
Anonymous  
Ashish Vakharia  
Atlanta Foundation  
Classic Commerical Service  
Combined Federal Campaign  
David Salyers  
Deborah and Dan Heller  
Delta Air Lines Employees Fair  
Share Program  
Eileen DeNeve  
Enterprise Vending Group, LLC/  
Red Wizard Group  
Fulton School Employees'  
Charitable Fund Inc.  
George L. Chang  
Georgia Epsilon of Sigma Alpha  
Epsilon  
Georgia Tech Athletic Association  
Heery International Inc.  
Hormel Foods Corporation/  
Charitable Trust  
IBM Employee Services Center  
Julie Barber  
Kerry McNair  
KPMG'S Community Giving  
Campaign  
Mary Brock  
McMaster-Carr  
Morris, Manning & Martin, LLP  
North Avenue Presbyterian Church  
Richard C. Munroe Foundation  
Richard Higgins  
Rite Aid Foundation KidCents  
Rumph and Associates  
Schulten Ward & Turner LLP  
Scott C. McGee  
Sprouts Healthy Communities  
Foundation  
Sue Ellis  
SunTrust Bank One Pledge Plan,  
Inc./SunTrust United Way Camp  
Suzuki School Buckhead  
Synovus Foundation  
The Home Depot PAC Match  
Program  
The TJX Foundation, Inc.  
The Wilson Family Foundation  
c/o David D. Wilson

## \$2,500–\$4,999 NURTURER

Alan Saltzman  
Alison B. Jones  
Archibald & Elaine Boyce  
Memorial Foundation  
AT&T Services, Inc.  
Austin Community Foundation  
Daugherty Business Solutions  
Dekra North America, Inc.  
DoTopia  
Georgia Piedmont Technical  
College  
Holy Vietnamese Martyrs  
Catholic Church  
Janet M. Chapman  
Karl Stitts  
Ken Albright  
KPMG LLP  
Larry Rooney  
Lindsay Britt  
Liz Miller  
Melissa Frawley  
Michael Young  
Michelle D. Livingstone  
Montlick & Associates, P.C.  
Network For Good  
Rick and Rebecca Puig  
Roderick S, Flossie R, & Helen M  
Galloway Foundation, Inc.  
Ryan Althoff  
Schwab Charitable Fund  
Silicon Valley Community  
Foundation  
Sleepy Hollow - 54/ 20th  
Century Fox TV  
Stephen L. Simons  
The 2492 Fund Trust  
The River Foundation, Inc.

Thomas H. Lanier Foundation  
Transfirst  
Tua Florence Hunt Maxwell  
Foundation  
Valerie Cohn  
Villa Del Lago Foundation of the  
Austin Community Foundation  
W.R. Berkley Corporation  
Charitable Foundation  
YourCause, LLC  
Zachary McElveen

## \$1,000–\$2,499 ACHIEVER

Active Network  
Ajaz Ahmed  
Alexis Flannigan  
Alexis Guilbert  
Alfred A. Lindseth  
Alston & Bird LLP  
Andrew Tallant  
Anne Averett  
Anthony J. Galioto  
Atlanta Association of Health  
Underwriters  
Balloun Family Foundation  
Barbara M. Reid  
Beaucoup Swoozies LLC  
Brandon P. Baker  
Brenda Richard  
Brigitte Peck  
Cambridge Systematics  
Caroline B. Philson  
Catamount Constructors  
Charles Reed  
Chuck Young  
Colby C. Buell  
Craig Ruff  
Cynthia Edwards



David Cross  
 Deborah A. Howard  
 Deborah Wilkes  
 Derek S. Vannostran  
 Dominique Bozeman  
 Doug B. Bowles  
 Doug Fedewa  
 Elizabeth Mathews  
 Emily Kent  
 Gap Foundation c/o  
 CyberGrants, Inc.  
 Georgia Association of Personnel  
 Services  
 Georgia Power Foundation, Inc.  
 Girard E. Boudreau  
 Give with Liberty /Liberty Mutual  
 Foundation Match  
 Jack Halpern  
 Jacqueline Smith  
 Jeffrey Martin  
 Jennifer Stewart  
 Jennifer Wagner  
 Jina Sanone

Pamela J. Coffey  
 Patrick Flanagan  
 Paul D. and Kristin Fancher  
 PC Construction  
 Philip H. Davis  
 Phylea Carter  
 Presbyterian Women of Northwest  
 Presbyterian Church  
 Randall Kirsch  
 Rhen's Nest Toy Shop, LLC  
 Ronald Davie  
 Rosalyn Ratchford-Shook  
 Russell E. Butner  
 Sarah Batts  
 Scott Freed  
 Shalit Mitzvah Fund  
 Siesta D. Haley  
 Skin Path Solutions  
 Square App  
 St Matthew Catholic Church  
 St. Jude Catholic School  
 Stacey Wallen  
 SunTrust Banks, Inc.

AGL Employee Foundation Inc.  
 Agustina Bacce  
 Aida Ayala  
 Aileen Robison  
 Aisha I. Baaith-Jefferies  
 Alabama Alumni & Booster Club  
 of Atlanta  
 Albert M. Lewis  
 Alden Miles  
 Alexander S. Garrett  
 Alexandra E. Cooper  
 Alexandra I. Duplessis  
 Alfred Johnson  
 Alfred Kittrell  
 Ali Nikain  
 Alice K. Michaelson  
 Aline Carson  
 Alisa Lofton  
 Alisha Stratton  
 Alison Oswald  
 Alison Reese  
 Alissa Bowman  
 Allen Ray  
 Allied Fence  
 Allison Koenig  
 Allison Mann  
 Ally Y. & Joy Newberry  
 Alpha Delta Kappa Sorority Inc  
 Alyce Furr  
 Alyssa Hurd  
 Amanda Childs  
 Amanda Szwast  
 Aminah Nailor  
 Amy B. Litvak  
 Amy Halliday  
 Amy McCoy  
 Amy Motto

Anonymous  
 Anthony Gianino  
 Anthony Hezekiah  
 Anthony J. Varamo  
 Antoine H. Ayoub  
 Antoinette Battle  
 Antoinette Bunkley  
 April McRae  
 APTEAN  
 Arlisher L. Jones  
 Arnita Miller  
 Asha Branch  
 Ashley Sims  
 Ashli I. Foston  
 Atlanta Art Solutions  
 Atlanta Beltline Inc.  
 Atlanta Communities Real Estate  
 Brokers  
 Atlanta Health Connection  
 Atlanta History Center  
 Atlanta Montessori International  
 School  
 Atul Gupta  
 Audrey Williams  
 Avo Simonian  
 Bailey Ernestes  
 Baker Donelson  
 Bambi Rentschler  
 Bank of America Employee  
 Giving Campaign c/o  
 Cybergrants, In



John Lichtenwalter  
 John Mixon  
 Julie Adkins  
 Katherine McCormick  
 Kay Crump  
 Kelvin J. Holloway  
 Kerry Welnhellner  
 Kiran Richardson  
 Landmark Properties  
 Marcia Allen  
 Mary Walter  
 Matt Szymczak  
 Matthew Hartnett  
 Matthews  
 Melvin Moore  
 Michael Hinson  
 Michael Menis  
 Michael Stars Inc  
 Mike Dupuy  
 Nancy Collie  
 Nathan E. Briesemeister  
 National Christian Foundation  
 Nikhil Perumbeti  
 Nora O'Reilly  
 Olympic Printing Company

Susan Kupferberg and Richard  
 Mitchell  
 The Columbus Foundation  
 The Hughes Family Foundation  
 The Junior League of Atlanta,  
 Inc.  
 The Mark C. Pope III Foundation  
 Tina Livsey  
 Tracy Ariail  
 William Galloway  
 William Jonas  
 Zenobia Day

**\$1-\$999**  
**PATRON**

Aaron Rogers  
 Aaron Ross  
 Abby L. Friedman  
 Acadia Coffee Service  
 Adaeze Odigwe  
 Adele Glasser  
 Adina Langer  
 Adrian Barzaga  
 Adrienne Cansler

Andre de Winter  
 Andrea Barnette  
 Andrea Bastek  
 Andrea Kendall  
 Address M. Williams  
 Andrew Goldner  
 Andrew H. Kincheloe  
 Andrew Stroud  
 Angela Alexander  
 Angelica Brasfield  
 Angie Grantschnig  
 Anita Watts  
 Ann Mayson  
 Ann McCoy  
 Ann P. McDonald  
 Anna Katema  
 Anna M. Johanson  
 Anna Young Schreck  
 Anneliese G. Moreno  
 Anonymous  
 Anonymous  
 Anonymous  
 Anonymous  
 Anonymous  
 Anonymous

Banu Akan  
 Barbara C. Meyer  
 Barbara Chandler  
 Barbara Collins  
 Barbara Johnston  
 Barry Hundley  
 Barry Madison  
 Bart Speziali  
 Belle Voyles  
 Ben Sellers  
 Bennie Boswell  
 Benoy Kazani  
 Berkley Specialty UW Managers  
 Beth Couvillon  
 Beth Dierschow  
 Betty Davis  
 Beyonka Williams  
 Bianca Pitts  
 Bina Janardanan  
 Blake Underwood  
 Blue Crew/ Georgia State  
 Football  
 Bob Richardson  
 Bobby Anderson  
 Bonnie Lavine  
 Brad Cardon  
 Brad Naugle  
 Bradley E. Mobley  
 Brandi Burns  
 Brandon R. McKinnie

Braxton Underwood  
 Breana M. Jones  
 Brenda K. McRae  
 Brenda Kelly  
 Brennan Breault  
 Brent Farnham  
 Brent Kaplan  
 Brentley Dacosta  
 Brett Haley  
 Brett Johns  
 Brett Phillips  
 Brian D. Hogg  
 Brian Graham  
 Bristol Hospice  
 Brittany Magwood  
 Brittany Mott  
 Britton Edwards  
 Bruce A. Lucia  
 Bruce I. Crabtree  
 Brynn Bardacke  
 Calvary Christian School  
 Calvin Gleaton  
 Calvin Heng  
 Cameron Johnson  
 Campbell Elementary School  
 Campus Community Partnership  
 Foundation  
 Candance Pass  
 Candice E. Albritton  
 Cards for Causes  
 Carla Denise Anderson  
 Carmen Simmons  
 Carol F. Dunbar  
 Caroline Veal  
 Caroline Warren  
 Carolyn C. McClatchey  
 Carolyn McDaniel  
 Carrie Shevlin  
 Carrie Smith  
 Carroll Thomas - McLemore  
 Carson Hobbs  
 Casey Tuttle  
 Cassandra Clifton  
 Catherine Morris  
 Catherine Ratigan  
 Catherine T. Porter  
 Cathlean Jackson  
 CCC Employees  
 Celebrated Experiences  
 CFCNCA 0990  
 Chad Blalock  
 Chad Pigg  
 Chantell M. Barnett  
 Charles Bosaic  
 Charles Maton  
 Charles Page  
 Charles Ross  
 Charles Slick  
 Charvette Shumaker  
 Chastine J. Schoen  
 Chaundra Edwards  
 Chean Chea

Cherie Bogan  
 Cheryl L. Archer  
 Cherylene D. Sands  
 Chester P. Rollins, Jr.  
 Chittam Thakore  
 Chris Polony  
 Christie Robinson  
 Christina L. Smoak  
 Christine Hilbun  
 Christine Hopkinson  
 Christopher Devine  
 Christopher Groves  
 Christopher Irion  
 Christopher Jankowski  
 Christopher Wiseman  
 Christy Duncan  
 Christy Kemp  
 Cindy Edwards  
 Cinnamon Sullivan  
 Clare Richie  
 Claudia O. Stimmel  
 Community in Schools  
 Connie Conwell  
 Constance Page  
 Constance Stroud  
 Craig & Alexis Simpson  
 Cristina Likins  
 Cristina Rochez  
 Crossmark Atlanta All Stars 290  
 Crystal Lewis  
 CVS CAremark Charity Trust  
 Account  
 Cynthia Bolick  
 Cynthia Mitchell  
 Cynthia Parker  
 Cynthia W. Burton  
 D.B Kenney  
 Dacus Stewart  
 Damon Gordon  
 Dana Jackson  
 Dana Taylor  
 Daniel C. Marshall  
 Daniel Davis  
 Daniel Triandiflou  
 Danielle Iuliano  
 Danielle Moore  
 Danielle Winfield  
 Daphne Babrow  
 Darlene Pinkston  
 Darrius Newton  
 Darryl Cooper  
 Darryl Mosely  
 David D. Baird  
 David Dunlap  
 David Evans  
 David Gluck  
 David Gore  
 David Hansen  
 David J. Feldman  
 David Johnson  
 David Lundy  
 Dawn Forman

Dawn McCullar  
 Dawn Pickee  
 Dayne Pryor  
 Deana Hall  
 Debbie L. Dempsey  
 Deborah A. Sharp  
 Deborah Lyles  
 Debra Arnold  
 Debra Bouloukos  
 Debra Brown  
 DeKalb School of the Arts  
 Delisa Glover  
 Demetri Browe  
 Demetria Tinsley  
 Demetrius Bowman  
 Denise Wilbert  
 Derek Bambach  
 Derek Shaw  
 Deserie McCauley  
 Diana Murphy  
 Diane Benson  
 Diane Bradley  
 Dianne K. Diggle

Emily Miller  
 Emily Oren  
 Emma-Leigh Braemer  
 Emory Healthcare Hospitals  
 Employees' Retirement Service  
 Eric and Ana Robbins  
 Eric J. Dixon  
 Eric Martin  
 Eric Zimmerman  
 Erika F. Campbell-Harris  
 Erin Miller  
 Ernesto Hylton  
 Esther Kim  
 Evette Brown  
 Farmer's Gourmet Catering  
 Fernbank Museum  
 Fidelity Charitable  
 First Baptist Snellville  
 Frances M. Dowling  
 Francine Bevard  
 Frank and Jan Johnston Family  
 Fund  
 Frank Butterfield



Dina Jones-Myrick  
 Dina Myrick-Jones  
 Dionne Delli-Gatti  
 Dokmai Bell  
 Donald Wooten  
 Donna J. Dummett  
 Donna W. Durant  
 Donnie West  
 Dr Lisa Lewen  
 Duke Challenges YOU  
 Earl Kates  
 Eileen O'Neill  
 Einstein Bros.  
 Elaine Wueger  
 Elana Frank  
 Eleanor Attwood  
 Eleanor Lewis  
 Elena Popa  
 Elisabeth D. Strada  
 Elizabeth O'Connor  
 Elizabeth Wallace  
 Elizabeth White  
 Elsy Michael  
 Emily Castle  
 Emily Fletcher

Fred Zhloch  
 Funlola Pando  
 Gayle Langley  
 Gayle Woods  
 Gaytra Lathon  
 Geoffrey Gavin  
 George E. Morgan  
 George Rivard  
 Georgia's Own Credit Union  
 Gerald King  
 Gertrude A. McGovern  
 Gloria Wheeler  
 Goodard School  
 Greg Posel  
 Gregory Scherrer  
 Greta Davis  
 Gynesis Buissereth  
 Gypsy Kitchen, LLC  
 Hamilton Reynolds  
 Hannah Beauth  
 Harrison Butker  
 Harry Rhame  
 Harry Thompson  
 Harvel D. Young  
 Hazel Crawford



Heather Martin  
 Heather McCann  
 Heather Meloy  
 Heather Mitchell  
 Heather Wright  
 Helen Beacham  
 Helena Duncan  
 Henry B. Harris  
 Hiroyuki Matsumoto  
 Holly Brown  
 Holly McGinnis  
 Homer Clements  
 Homrich Berg, Inc.  
 Howell Jones  
 Ideas America  
 Ignacio Diego  
 Indraue Mello  
 Insperty  
 International Preschools, LLC  
 Irene White  
 Irma betancourt  
 Iron Mountain, Inc.  
 Isabel M. Dejesus  
 J. Craig Addison  
 J. Smith Lanier Co.  
 Jackie Damico  
 Jacqueline D. Bell  
 Jacquelyn Tookes  
 Jamahl Berry  
 James & Trina Davis  
 James H. Roberts  
 James Hart  
 James M. Collins Foundation  
 James Morris  
 James Pastan  
 James R. Hoffman  
 James Reese  
 James Stanton  
 Jamil Padilla  
 Jane & Mark Sutter  
 Jane Lindsey  
 Jane M. Saral  
 Janet Isralsky  
 Janet M. Lavine  
 Jasmine Crockett  
 Jasmine Thomas  
 Jason B. Shain  
 Jason Reeves  
 Jay Cohen

Jay McGinnity  
 Jay Trambadia  
 Jazzmyne Thompson  
 JcPenney Change for the Better  
 Campaign c/o CyberGrants,  
 LLC  
 Jean Frawley  
 Jeff Carrico  
 Jeff Nicholson  
 Jeff Norris  
 Jeffrey Dobrinsky  
 Jeffrey Snow  
 Jeffrey E. Jones  
 Jennifer Beard  
 Jennifer C. DeWeese  
 Jennifer Dempsey  
 Jennifer English  
 Jennifer Grippa  
 Jennifer Issacson  
 Jennifer Kraffen  
 Jennifer Leggott  
 Jennifer Lester  
 Jennifer Odom  
 Jennifer Okeh  
 Jennifer Schultz  
 Jennifer Stevens  
 Jenny Palacio  
 Jenny Tidwell  
 Jermaine A. Brown  
 Jerome Moore  
 Jerry Jackson  
 Jerry Schmitz  
 Jerzy Procinski  
 Jessica Rodbell  
 Jessica strauss  
 Jessie Barkley  
 Jill Bernstein  
 Jill M. Girardeau  
 Jill S. Forte-Jackson  
 Jill Williams  
 Joan Lavin  
 Joan McLaughlin  
 Joanne  
 Joanne Pauken  
 Jodi Geary  
 Jodi Knighton  
 Jodi Wheeler Toppen  
 Joey Hatley  
 John Coppedge

John Dobbs  
 John Holder  
 John Ingle  
 John Little  
 John P. Schlichting  
 John Patchoski  
 John Rafkin  
 John Tirrill  
 John Weindler  
 Johnnie A. Lattimore  
 Jon Brees  
 Jones & Kolb  
 Jordan Martin  
 Jordan Smith  
 Joseph J. Grimm  
 Joseph Sacco  
 Josh Schicker  
 Joshua Hooks  
 Josie's Friends  
 Joyce Thomas-Vinson  
 Joye Girardot  
 JP Morgan Chase Global  
 Philanthropy  
 Jude M. Elengical  
 Judith R. Brown  
 Julia Pastor  
 Julie Boggs  
 Julie Curless  
 Julie Davis  
 Julie Harger  
 Julie Peters  
 Jumping World Georgia, Inc.  
 Just Give  
 Justin McGee-Moore  
 Justine McCrory  
 Kailash Lala  
 Kaitlyn Denney  
 Kala Baker  
 Kara Short  
 Karan Olson  
 Karen Bowens  
 Karen Campbell-Elder  
 Karen Cosgrove  
 Karen Kaye  
 Karen Maxwell  
 Karl Ryker  
 Kasandra Williams  
 Kashmere Thompson  
 Kate Hearne  
 Katherine Fowler  
 Katherine Stevens  
 Katherine Stokes  
 Kathleen Stinnett  
 Kathryn Rensch  
 Kathryn S. Wilson  
 Kathy Hart  
 Kathy Schoonmaker  
 Katie Joiner  
 Katie W. Thomas  
 Katrina D. Holloway  
 Katrina Kiselinchev  
 Kaydee Wilson

Keisha Miles  
 Keisuke Takeda  
 Kellie Hannon  
 Kelly Gallagher  
 Kelly Harris  
 Kelly Masters  
 Kelly Whitehart  
 Keltha Minchew  
 Ken Skinner  
 Kenan Hill  
 Kendra Scott, LLC  
 Kenitra Halyard  
 Kenneth Maddox  
 Kenneth Songy  
 Kenneth Twilley  
 Kenny Budd  
 Keri & Mario Giusti  
 Keryl Brown  
 Kevin Burke  
 Kim Tuyen Nguyen  
 Kimberly Curtis  
 Kira Greco  
 Kirk W. Watkins  
 Krisshonna Brown  
 Kristen Taylor  
 Kristin Colvile  
 Kristin Doherty  
 Kristin Faunce  
 Kristin Mana  
 Kristin S. Kell  
 Kristina A. Satterwhite  
 Kroger Fresh Fare  
 Kumiko W. Newmark  
 Kyle Smith  
 LaDonna B. Spratley  
 Lakeisha DePeyster  
 LaKeisha Walker  
 Lakshmi Perumbeti  
 Lamont Powell  
 Lara Balser  
 Larry Kelly  
 Latina Callender  
 Laura Madden  
 Laura Poss  
 Lawrence P. Kloet  
 Lawrence Wolfberg  
 Leah & Mazie Ruth Thomas  
 Lee Gillespy  
 Leighton Stradtman  
 Lemeya Ferrell  
 Lenore E. Egan  
 Leonard Walley  
 Lesley Smith  
 Leslie Jumper  
 Leslie L. Hill  
 Leslie Younker  
 Lethea Q. Mitchell  
 Lexa McDaniel  
 Libby and Gene Pearce  
 Lillie Axelrod  
 Lily Alan  
 Linda Carlisle

Linda Martin  
 Linda S. Harnishfeger  
 Linda Tedder  
 Lindsey Smith  
 Liqueane Francis  
 Lisa Flagg  
 Lisa Lindgren  
 Lisa Meek  
 Lisa Sloop  
 Lisa Walker  
 Lisette Antuna  
 Lofton Odom  
 Lola Pando  
 Lonnie Vogler  
 Loraine Hoover  
 Loretta Hicks  
 Lori Byers  
 Lori McMillian  
 Lori Nash  
 Lorraine Contreras  
 Luca Magnanini  
 Luther & Claire Griffith  
 Foundation  
 Lynda Houser  
 Lynette Pitts  
 Mac Doherty  
 Mackenzie Adair  
 Malu Tansey  
 Manheim, Inc  
 Marcus Mayes  
 Mardia Roberts  
 Margaret D. Pierce  
 Margaret K. Orson  
 Margaret Smith  
 Margaritaville Enterprises, LLC  
 Maria Bazile  
 Maria Reardon  
 Maria Weatherby  
 Mark & KJ Hausman  
 Mark C. Sanders  
 Mark Macelroy  
 Mark Richman  
 Mark Rohs  
 Marsha J. Lesser  
 Marshall Hernandez  
 MARTA Employees Charity Club  
 Martha & William Murray  
 Foundation  
 Martha Ille  
 Martha Milton  
 Martin J. Rotter  
 Mary Adams  
 Mary Dressler  
 Mary Kathryn Kennon  
 Mary Lin Elementary  
 Mary Louise Clarke  
 Mary M. Poe  
 Mary Rider  
 Mary S. Inman  
 Mary Schoeffler  
 Mary Sebron  
 Mary Senn

MaryAnn Lategano  
 Masharn Austin  
 Massage Associates of Atlanta,  
 LLC.  
 Mathew Lee  
 Matt & Halle Granger  
 Matt & Pam Bettis  
 Matt Bower  
 Matt Donaghey  
 Matthew Hansen  
 Matthew Pesci  
 Matthew Prediletto  
 Matthew Unknown  
 Matthew Williams  
 Mauricio Ferreira  
 Maya Poplavski  
 Mazeen Porbandarwala  
 MB Real Estate  
 Meg Sewell  
 Meg Sweeney Miller  
 Megan Michitsch  
 Meghan H. Magruder  
 Melanie Kelman  
 Melanie Rose  
 Melanie Straessle  
 Melissa Gray  
 Melissa Hernandez  
 Melissa Knoll  
 Melissa Bell  
 Melissa Tolson  
 Mellie H. Polhill  
 Melodie N. Stewart  
 Melody Capone  
 Merle Carbo  
 Merrill Lynch  
 Mica Davis  
 Michael Allgood  
 Michael E. Johnson  
 Michael E. Pearson  
 Michael G. McCormack  
 Michael H. Shuster  
 Michael Handley  
 Michael Harris  
 Michael Jackson  
 Michael Johnson  
 Michael Perry  
 Michael Simmons  
 Michael Sontag  
 Michelle J. James  
 Michelle Nguyen  
 Michelle Vazquez  
 Mikayla Bucci  
 Mike Briggs  
 Mike Marley  
 Mike Simmers  
 Mina Harris  
 Mindy David  
 Mindy Planer  
 Misha Ghaznavi  
 Mitchell Brannen  
 Mocha Cares Foundation  
 Monica Y. Shorts



Mushtaq Fruitwala  
 NAI Brannen/Goodard  
 Nan Vogler  
 Nancy Shannon  
 Nashandra Hayes  
 Natalie M. Boyd  
 Natalie Putnam  
 National Philanthropic Trust  
 Navaz Porbandarwala  
 NCourage & NSpire Community  
 Outreach  
 Nedom Haley  
 Neta Rubinovitz  
 Nicholas Chaviano  
 Nicholas Hill  
 Nicholas J. Orphan  
 Nicholas Otto  
 Nicholas Petrarca  
 Nick Hedrich  
 Nicole Meiser  
 Nikole (for Gabe) Crowe  
 Nina G. Sprinkle  
 Nina Stallworth  
 Nisha Patel  
 Nobuhiro Okada  
 Nooshin McKinney  
 Nora Wintrow  
 Noral Decarlo  
 Norfolk Southern Corporation  
 Trust Account  
 Normalee Khouri  
 Nylanda Grace  
 Nzinga A. Banks  
 Olivia Owens  
 Olivia Williams  
 Orletta Rush  
 Palmer W. Mayer  
 Pam McNail  
 Pamela R. Tatum  
 Pamela Williams  
 Pascale Pierre  
 Patrice Ransom  
 Patricia Auriemmo  
 Patricia D. Grindel  
 Patricia R. Kirsch  
 Patricia Richmond  
 Patrick A. Buckley  
 Patrick Clarke  
 Patrick Marcovechio

Patterson Real Estate Advisory  
 Group  
 Paul Felch  
 Paul Mooring  
 Paula Edwards  
 Peggy L. Malone  
 Peter Hallenbeck  
 Peter Sereno  
 Phil Jenkins  
 Philip Bonelli  
 Phillip P. Davis  
 Phillip R. Harrison  
 Philoptochos/Annunciation  
 Greek Orthodox Cathedral  
 Phyllis E. Thomas  
 Pierre Pascale  
 Popmoney.com  
 Prathima Warrior  
 Publix Super Markets Charities,  
 Inc.  
 Publix Super Markets, Inc. -  
 Atlanta Division  
 Queen Virgin/Sugar Hair  
 Quyen Nguyen  
 R. M. Wilkiemeyer  
 Rachel Ammirati  
 Rachel Dines  
 Rachel L. Zingaro  
 Rahewa Isak  
 Rahul Sharma  
 Raima Basu  
 Ram Gopalakrishnan  
 Ray Connolly  
 Raye Handler  
 Raymond A. Jones  
 Reagan Zottnick  
 Reba Keller  
 Remco Witteveen  
 Renata Dennis  
 Renata Frank  
 Renee Alladin  
 Renee Smith  
 Renee Williams  
 Rhonda McNeece  
 Rhonda Ray  
 Rian Freedman  
 Richard B. Anderson  
 Richard G. Clarke  
 Richard Jones

Richard Lee  
Richard Perry  
Richard Robinson  
Richard Whiteman  
Richmond L. Mitchell  
Rising Phoenix Enrichment Program, Inc.  
Rite Aid Foundation  
Robert A. Green  
Robert Frick  
Robert G. Brazier  
Robert G. Ferguson  
Robert Lewallen  
Robert Lynch  
Robert Massey  
Robert Rickles  
Robert Scheib  
Robert Thiebaut  
Robert W. Cramer  
Roberto Loriatti  
Roberto Moraes  
Robin Fisher  
Robin Patton  
Roland Dawkins  
Ron Ricker  
Ronald E. Jones  
Ross Jacobs  
Russell J. Bowman  
Russell Korn  
Rusty Howard  
Saegye Kim  
Sallie and Joel Chasteen  
Sam Eid  
Sam Wammock  
Samirah H. Ross  
Samuel & Joyce Hall  
Samuel Srochi  
Sandra & Vic Holiday  
Sandra Mejia  
Sara McBride  
SaraAnne Maguire  
Sarah Cash  
Sarah Mauldin  
Sarah Touse  
Sarah Tranakos  
Schorpp Family  
Schroder Voyles  
Scott Allman  
Scott Duke  
Scott Givens  
Scott Howard Busby  
Scott Tiernan  
Sean Bajnath  
Selig Enterprises, Inc.  
Shana Cohen  
Shankar Narayanar  
Shannon Low  
Shannon Weidle  
Shantile Thomas  
Sharissa & Marissa Hall  
Sharmequia Doctor

Sharnell Isreal  
Sharon Altenbach  
Sharon Dunn  
Sharon Hill  
Sharon Iannotti  
Sharon McMahon  
Sharon Senaya  
Shawn Cunniff  
Shawn D. Cole  
Shay Campbell  
Shayne Family Philanthropic Fund  
Sheldon Cook  
Shelly Hoerner  
Shellye Sissoko  
Shemela Snead  
Sheri Porter  
Sheri Singer  
Shilpa Narayan  
Shinji Toriyama  
Shirley Lacy  
Shiva Nikau  
Shizue Yamazui  
Shizuko Mori  
Silvia Fernandez  
Sofia and Mati Miller  
Solstice Yoga & Pilates LLC  
Sonya Rich  
Sophia Greer  
St. Jude's Brazilian Community  
Stacey Swift  
Stephanie Brown  
Stephanie Fleetwood  
Stephanie Shanholtzer  
Stephen Denton  
Stephen Thurston  
Steve and Fonde Werts  
Steve Kraus  
Steve Latham  
Steven R. Anderskow  
Steven R. Prediletto  
Steven S. Dunlevie  
Steven Smith  
Steven Wohl  
Stoddard Manikin  
Sue E. Sherrill  
Sue L. Mobley  
Susan C. O'Farrell  
Susan J. Taylor  
Susan Ledbetter  
Susan Rose  
Susan Rothman  
Susan Solinsky  
Suzanne Baskow Ross  
Suzanne Dansby  
Suzanne Forte  
Suzanne J. Dondrea  
Suzanne Lerner Ttee  
Suzanne Potts  
Suzette Quarles  
Sylvia Dold  
Tachara Braggs

Tammy Barbe  
Tammy Jones  
Tammy McCoy  
TaQuonda Hill  
Tarik Yeasir  
Tashika McLeod  
Tatyana Repina  
Taylor Pike  
Taylor Shapero  
Teresa Odom  
Teresa Raczek  
Teresa Tinney  
Terri Lasoff  
Terry Eby  
Terry James  
Tetsuro Fujima  
The Cathedral Preschool  
The Cook's Warehouse  
The Gary E. Snyder Foundation, Inc.  
The Graves Foundation  
The Kula Foundation  
The Lookout Foundation  
The Mysore Foundation  
Theresa Thomas  
This Is It BBQ  
Thomas & Stephan Helland  
Thomas Foulks  
Thomas Houston  
Thomas M. Carroll  
Thomas Rumph  
TIAA-CREF Employee Giving Campaign  
Tiffany Culbert  
Tiff's Treats  
Tim Haugen  
Timothy M. O'Leary  
Timothy W. Hughes  
Tix 4 Cause, LLC.  
Toby Bonner  
Toheeb Owolabi  
Tom Mayfield  
Tom Mison  
Tomoyuki Yoshida  
Toni McCoy  
Tonia Guy Irion  
Tonia Harden  
Tony Miceli  
Tracey Tilmon- Jackson  
Traci Love  
Tracy White  
Trang (Jane) Hoang  
Travis Goodwin  
Trena Grady

Trista R. Edwards  
Troy Kin  
Tunza Hill  
Twanda R. Smith-Lee  
UB4ME Apparel LLC.  
United Way of Central Indiana, Inc.  
Valentine Aka  
Vanessa Price  
Vanessa Redman  
Vera F. Cohan  
Verlon E. Long  
Vicki L. Thompson  
Vicki Thompkins  
Vicky G. Chrzan  
Victor Pate  
Victoria Morich  
Vijay Bose  
Vintage Q, LLC. DBA Smokebelly BBQ  
Violeta Vivas  
Virginia Bianchetti  
Virginia Mitchell  
Virginia Stern  
Voya C/O Frontstream  
Voya Foundation  
W. Brinkley Dickerson  
W. Watt Neal  
Wai R. Wu  
Walt Disney World Co.  
Wedny Gaffney  
Wendy Kosek  
Wendy Miller  
William C. MacNabb  
William Cooper  
William Gray  
William O. Rice  
William Palmer  
William Peterson  
William Rich  
William Schoeffler  
William Vance  
William W. Thompson  
William White  
Xanthe & Ottmah Neal  
Xen Rendi Sima Ulm  
Xiomara Harris  
Yeah! Burger  
Yolanda H. Fann  
Yolanda M. Yancy  
Yolanda Whitty  
Yuko Wada McGraw  
Zina J. Evans

*We are grateful for each and every contribution and apologize to any donor whose name was inadvertently excluded from this listing.*

*We would like to thank the hundreds of donors who gave in kind donations for special events such as Holiday House and Project Renewal, as family sponsors during the holidays, and throughout the year to meet the Shelter's ongoing needs for diapers, healthy food, children's clothing and other essential items to assist the homeless families we serve.*

# Staff & Administration

## Executive Director

Sandra Holiday, Esq.

## Development Director

Barry Hundley

## Social Services Director

Mellony Gaston  
Alison Morgan

## Childcare Director

Billie Walker

## Finance and Administrative Director

Alfred Johnson

## Employment Counselor

Bravid Harris

## Family Services Coordinator

Akiba Jackson

## Development Resource Coordinator

Jordan Martin

## Donor Relations Coordinator

Carmen Simmons

## Instructional Lead Teacher

Aseelah Williams

## Business Manager

Tonnisha LaSalle

## Administrative Assistant

Keysha Peterson

## Teachers

Debra Adams  
Melanie Armstead  
Tamyia Brown  
Yolanda Brown  
Alexandra Green  
Latoya Leath  
Adrian Mosley  
Tameka O'Kelley  
Vicki Tompkins  
LaTesa Waller  
Kim Williams  
Kimberly Williams

## Nutrition Manager

Cynthia Jones

# Board of Directors

**Sarah Batts**/Junior League of Atlanta

**Robert Charles**/Suzuki Schools

**David Cross**/Coca-Cola

**Ron Davie**/Mail Center Plus (Immediate Past President)

**Michael Dupuy**/Family Dollar Stores

**Cynthia Edwards**/Georgia Piedmont Technical College

**Paul Fancher**/Troutman Sanders (Treasurer)

**Melissa Frawley**/Wells Fargo Bank

**Scott Freed**/Marriott International

**Alexis Guilbert**/Managing Consultant

**Deborah Heller**/North Avenue Presbyterian Church (Vice Chair)

**Christine Hopkinson**/IHG

**Alison Jones**/Alston & Bird LLP (Board Chair)

**John Lichtenwalter**/Catamount Constructors

**Michelle Livingstone**/The Home Depot

**Scott McGee**/KPMG LLP

**Micheal Menis**/IHG

**John Mixon**/Consultant

**Brigitte Peck**/Capstone Advancement Partners

**Alison Rand**/Primerica

**Brenda Richard**/Randstad USA

**Larry Rooney**/KPB Foods

**Alan Saltzman**/Montlick & Associates

**Jina Sanone**/Delta Airlines

**Carrie Nordman Smith**/UPS (Secretary)

**Jennifer Stewart**/LeasePlan USA

**Stacey Wallen**/Georgia State University

**Rebecca Wallis**/Community Volunteer

# Past Board Chair Council

William "Dub" Anderson

Ben Boswell

Stanley Brading, Jr.

Richard Clarke

Ron Davie

Joseph "Scoot" Dimon

Leon Haley, Jr., M.D.

Kelvin Holloway, M.D.

Timothy Hughes

Janet Lavine

Randall Kirsch

Susan O'Farrell

Lynn Merrill

Barbara Reid

Alexis Scott

P.O. Box 54322  
Atlanta, Georgia 30308  
404-892-3713  
www.acsatl.org



Window

Cabinet

Shelf

Printing donated by



www.primerica.com



Atlanta Children's Shelter  
ENDING FAMILY HOMELESSNESS FOR 30 YEARS